



LSEG Identity Verification Solutions

Document and Biometric Verification: Secure Onboarding at Scale

Revolutionise customer onboarding with Document and Biometric Verification, a next-generation solution that delivers superior accuracy, speed, and security for verifying identities — all while streamlining your workflow.

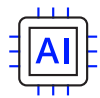
The Digital Identity Landscape is Changing

The rise of synthetic media, such as deepfakes, is rapidly changing the digital identity landscape. Against this backdrop, verifying customer identities is more important than ever in preventing fraud and ensuring compliance. Document and Biometric Verification offers a superior solution, leveraging advanced AI and deep learning technology to automate, streamline and enhance the identity verification process.

What Document and Biometric Verification Does

Document and Biometric Verification provides a comprehensive identity verification process, combining facial recognition, document screening and liveness detection. By capturing and analysing biometric data and government-issued documents, identities can be quickly confirmed with greater accuracy.

Key Features



Deep Neural Network: Document and Biometric Verification is underpinned by an AI-powered engine that automatically learns from user input, resulting in more accurate and reliable verification.



Liveness Detection: Advanced techniques are used to verify that a live person is interacting as they move through the onboarding workflow, helping prevent spoofing attacks.



Zero Bias AI™ Tested: Underlying technology is designed to be unbiased, protecting against discrimination based on race, age, or gender.

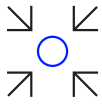


Global Coverage: We verify government-issued ID documents from every country worldwide, with the largest coverage globally.



Deepfake Defender™: Deepfake and generative AI attacks are detected promptly, safeguarding against fraudulent identities.

Why Choose Document & Biometric Verification?



Unmatched Accuracy:

Leveraging cutting-edge AI and deep learning, Document and Biometric Verification achieves outstanding face matching accuracy and comprehensive document fraud analysis.



Global Reach and Flexibility:

Documents can be processed in a vast range of languages and typesets with high accuracy. The solution handles government-issued identity documents from every country and territory globally, such as passports, driving licences and residence permits.



Frictionless User Experience:

A fully automated workflow results in rapid turnaround times (under 60 seconds) and a seamless user experience.



Scalability and Customization:

Onboard new customers swiftly and efficiently, regardless of location. The solution is cloud-based and can be adapted to meet specific business needs and regulatory requirements.

Benefits for Your Business

Enhanced Security:

Protect your business from fraud, including the rise of synthetic media, and meet compliance requirements with confidence.

Reduced

Onboarding Friction:

Eliminate time-consuming manual verification processes and improve customer satisfaction.

Increased

Operational Efficiency:

Streamline your onboarding workflow and save valuable resources.

Extensive Certifications, Outstanding Compliance

Document and Biometric Verification is powered by the highest-rated company globally to pass Level 1 & Level 2 Presentation Attack Detection (PAD) assessments with a 100% accuracy in identity spoof attacks. Audited multiple times to fulfill multiple ISOs, our underlying partner's platform supports legal compliance with EU, US, and other global money laundering laws.

Partner platform certifications include:

- **NIST:** National Institute of Standards and Technology
- **iBeta/BixeLab:** Independent testing laboratories
- **ISO 30107-3:** International Organization for Standardization
- **Government entities:** Adherence to various government regulations and standards
- **AICPA SOC:** American Institute of Certified Public Accountants System and Organization Controls

With a robust commitment to security and compliance, Document and Biometric Verification provides you with the peace of mind knowing that your customer data is protected and your business is operating within legal boundaries.

LSEG Identity Verification Solutions

LSEG offers a comprehensive suite of identity verification solutions that enable you to:

- Verify user identities against independent and authoritative sources globally
- Ensure users are who they claim to be through powerful document and biometric verification
- Conduct screening and identity checks in a single UI, via LSEG World-Check One

Enhance your identity verification processes with our comprehensive suite of solutions

VERIFY

Global Consumer and Business Identity Verification

Verify consumer and business identities in real-time, against 400+ independent, authoritative sources across 50+ countries. Meet your KYC and KYB obligations with our data-first identity verification capabilities.



LSEG
Identity
Verification
Trifecta

SCREEN

Identity Check In World-Check One

Conduct identity verification checks and screening checks in a single solution via LSEG World-Check One, our award-winning database that's used in screening programs for KYC, AML, sanctions, and anti-bribery and corruption compliance.

AUTHENTICATE

Document and Biometric Verification

Ensure users are who they say they are with robust, comprehensive Document and Biometric Verification. Document and language coverage is for every country and territory globally and their government-issued identity documents.

Document and Biometric Verification is ideal for:

- **Financial institutions:** Enhance KYC and AML compliance.
- **Fintechs:** Simplify and secure customer onboarding.
- **Cryptocurrency exchanges:** Meet stringent regulatory requirements.
- **Corporates:** Verify sellers (eCommerce), DNFBPs (gaming, legal firms).

Delivery Options

Document and Biometric Verifications delivered as a SaaS solution, providing flexibility and scalability.

The service includes:

- ▶ Facial matching ▶ Document screening ▶ Liveness detection

Summary

Document and Biometric Verification offers a superior solution for identity verification, combining advanced technology, global coverage, and a seamless user experience. By automating the identity verification process and ensuring accuracy, we help organisations protect themselves against the rise of synthetic media, enhance security, streamline operations and improve customer satisfaction.

Ready to Learn More?

Contact us today to learn how Document and Biometric Verification can transform and secure your onboarding process.