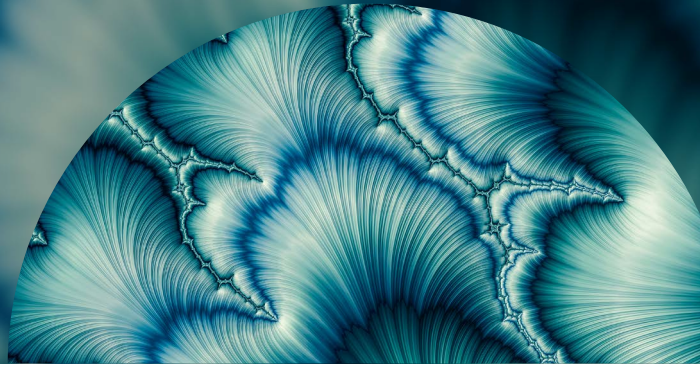


SOLUTION OVERVIEW

FTSE World High-Yield Bond Index

A complete picture of the global corporate high-yield market



A comprehensive, modular approach to measuring the High-Yield world market

The FTSE World High-Yield Bond Index brings FTSE US High-Yield Market and FTSE Pan-European High-Yield Bond indexes under one umbrella, tracking USD, EUR, GBP and CHF high-yield corporate debt. Leveraging deep expertise in global benchmark solutions, FTSE Russell offers a comprehensive, flexible range of indexes designed to track the corporate high-yield bond markets. Powered by LSEG Data & Analytics, the index paves the way for portfolio managers to express a view and engage in value-driven investment approaches across world markets.

Flexible framework: Granular sub-indexes utilizing a consistent, transparent index methodology and sophisticated customization capabilities allow for multiple flexible combinations of corporate high-yield benchmarks and beyond.

Transparent, rules-based construction: FTSE Russell is committed to leading global best practice standards in index governance. Objective index construction rules are publicly available on ftserussell.com.

Integrated solutions: FTSE Russell offers depth and breadth of market coverage, data, and analytics, providing investors with the tools they need to track market dynamics from any angle.



**FTSE
RUSSELL**
An LSEG Business

A complete picture of the world corporate high-yield market

REGION	INDEX BENCHMARK	DESCRIPTION
World	FTSE World High-Yield Bond Index	<ul style="list-style-type: none"> The FTSE World High-Yield Bond Index provides a broad measure of the global high-yield bond market. This multi-currency benchmark measures the performance of global high-yield CHF, EUR, GBP, and USD denominated debt tracked by the FTSE US High-Yield Market and the Pan-European High-Yield Bond indexes. Sub-indexes are available in any combination of currency, industry sector, maturity, and rating.
	FTSE Pan-European High-Yield Bond Index <ul style="list-style-type: none"> FTSE Euro High-Yield Bond Index FTSE Sterling High-Yield Bond Index FTSE Swiss Franc High-Yield Sub-Index 	<ul style="list-style-type: none"> The FTSE Pan-European High-Yield Bond Index measures the performance of high-yield corporate debt denominated in Euro (EUR), Swiss Franc (CHF), and UK Sterling (GBP). The index comprises cash-pay, zero-to-full (ZTF), pay-in-kind (PIK), and step-coupon bonds. Sub-indexes are available in any combination of corporate sector, maturity, and rating. Minimum issue size reflects local market dynamics and is set at CHF 100 million, EUR 200 million, and GBP 150 million. Base date of December, 2012 for comprehensive historical data.
Regional	FTSE US High-Yield Market Index	<ul style="list-style-type: none"> The FTSE US High-Yield Market Index is a USD denominated index which measures the performance of high-yield debt issued by corporations where Country is assigned to Australia, Belgium, Canada, France, Germany, Italy, Japan, the Netherlands, Sweden, Switzerland, the United Kingdom and the United States according to the FTSE fixed income methodology. Recognized as a broad measure of the North American high-yield market, the index covers cash-pay, deferred-interest securities, and debt issued under Rule 144A in unregistered form.
	FTSE US High-Yield Market Index-Capped	<ul style="list-style-type: none"> Sub-indexes are available in any combination of industry sector, maturity, and rating. Sub-index tracking performance of debt issued by corporations domiciled in the US and Canada is also available. Minimum issue size is USD 250 million. Over 20+ years of historical data is available.

FTSE World High-Yield Bond Index methodology highlights

As a multi-currency flagship measure of the world high-yield debt markets, the index represents the union of the FTSE US High-Yield Market and Pan-European High-Yield Bond Index. Through thoughtful approach to membership criteria, this flagship index strives to achieve a balance of relevance and comprehensiveness in its construction.

	METHODOLOGY
Minimum maturity	At least one year to maturity
Minimum amount outstanding	CHF: 100 million EUR: 200 million GBP: 150 million USD: 250 million
Credit quality	Maximum quality: BB+ by S&P and Ba1 by Moody's Minimum quality: C by S&P and Ca by Moody's (excludes defaulted bonds)
Composition	See composition criteria for the FTSE US High-Yield Market Index and the FTSE Pan-European High-Yield Bond Index
Weighting	Market capitalization
Rebalancing	Once a month on the last business day of the month (pricing as of the last business day of the monthly and settlement as of the last calendar day of the month)
Reinvestment of cash flow	At daily average of the local currency one-month Eurodeposit rate, calculated from the actual scheduled payment date of the cash flow through the end of the reporting period
Pricing	See pricing calculation assumptions for the FTSE US High-Yield Market Index and the FTSE Pan-European High-Yield Bond Index
Calculation frequency	Daily
Settlement date	Monthly: Settlement is on the last calendar day of the month Daily: Same day settlement except if the last business day of the month is not the last calendar day of the month; then, settlement is on the last calendar day of the month
Fixing date	Each month, the upcoming month's index constituents are "fixed" on the profile fixing date. Each year's scheduled fixing dates are published on the website
Base date	December 31, 2012

Key benchmark features & benefits:

- 1**

Locally calibrated minimum amount outstanding thresholds ensure relevant securities are captured at issue for each market, while also targeting liquid issues.
- 2**

The FTSE World High-Yield Bond Index brings under one umbrella high-yield bonds from vibrant high-yield markets globally.

Capturing all relevant securities for each local market, the index provides a representative and comprehensive performance measure, and tracks the full investment set.

Modular construction allows for customization across currency, maturity profile, credit quality asset and industry classification, or any combination of the above, as well as utilization of FTSE Russell's robust factor framework.
- 3**

Powered by robust pricing and analytics solutions, the index offers comprehensive daily index history from December 31, 2012, as well as a robust set of performance metrics and analytics.

Disclaimer

© 2023 London Stock Exchange Group plc and its applicable group undertakings (the "LSE Group"). The LSE Group includes (1) FTSE International Limited ("FTSE"), (2) Frank Russell Company ("Russell"), (3) FTSE Global Debt Capital Markets Inc. and FTSE Global Debt Capital Markets Limited (together, "FTSE Canada"), (4) FTSE Fixed Income Europe Limited ("FTSE FI Europe"), (5) FTSE Fixed Income LLC ("FTSE FI"), (6) The Yield Book Inc ("YB") and (7) Beyond Ratings S.A.S. ("BR"). All rights reserved.

FTSE Russell® is a trading name of FTSE, Russell, FTSE Canada, FTSE FI, FTSE FI Europe, YB and BR. "FTSE", "Russell", "FTSE Russell", "FTSE4Good", "ICB", "The Yield Book", "Beyond Ratings" and all other trademarks and service marks used herein (whether registered or unregistered) are trademarks and/or service marks owned or licensed by the applicable member of the LSE Group or their respective licensors and are owned, or used under licence, by FTSE, Russell, FTSE Canada, FTSE FI, FTSE FI Europe, YB or BR. FTSE International Limited is authorised and regulated by the Financial Conduct Authority as a benchmark administrator.

All information is provided for information purposes only. All information and data contained in this publication is obtained by the LSE Group, from sources believed by it to be accurate and reliable. Because of the possibility of human and mechanical error as well as other factors, however, such information and data is provided "as is" without warranty of any kind. No member of the LSE Group nor their respective directors, officers, employees, partners or licensors make any claim, prediction, warranty or representation whatsoever, expressly or impliedly, either as to the accuracy, timeliness, completeness, merchantability of any information or of results to be obtained from the use of FTSE Russell products, including but not limited to indexes, data and analytics, or the fitness or suitability of the FTSE Russell products for any particular purpose to which they might be put. Any representation of historical data accessible through FTSE Russell products is provided for information purposes only and is not a reliable indicator of future performance.

No responsibility or liability can be accepted by any member of the LSE Group nor their respective directors, officers, employees, partners or licensors for (a) any loss or damage in whole or in part caused by, resulting from, or relating to any error (negligent or otherwise) or other circumstance involved in procuring, collecting, compiling, interpreting, analysing, editing, transcribing, transmitting, communicating or delivering any such information or data or from use of this document or links to this document or (b) any direct, indirect, special, consequential or incidental damages whatsoever, even if any member of the LSE Group is advised in advance of the possibility of such damages, resulting from the use of, or inability to use, such information.

No member of the LSE Group nor their respective directors, officers, employees, partners or licensors provide investment advice and nothing in this document should be taken as constituting financial or investment advice. No member of the LSE Group nor their respective directors, officers, employees, partners or licensors make any representation regarding the advisability of investing in any asset or whether such investment creates any legal or compliance risks for the investor. A decision to invest in any such asset should not be made in reliance on any information herein. Indexes cannot be invested in directly. Inclusion of an asset in an index is not a recommendation to buy, sell or hold that asset nor confirmation that any particular investor may lawfully buy, sell or hold the asset or an index containing the asset. The general information contained in this publication should not be acted upon without obtaining specific legal, tax, and investment advice from a licensed professional.

The information contained in this report should not be considered "research" as defined in recital 28 of the Commission Delegated Directive (EU) 2017/593 of 7 April 2016 supplementing Directive 2014/65/EU of the European Parliament and of the Council ("MiFID II") and is provided for no fee.

Past performance is no guarantee of future results. Charts and graphs are provided for illustrative purposes only. Index returns shown may not represent the results of the actual trading of investable assets. Certain returns shown may reflect back-tested performance. All performance presented prior to the index inception date is back-tested performance. Back-tested performance is not actual performance, but is hypothetical. The back-test calculations are based on the same methodology that was in effect when the index was officially launched. However, back-tested data may reflect the application of the index methodology with the benefit of hindsight, and the historic calculations of an index may change from month to month based on revisions to the underlying economic data used in the calculation of the index.

This document may contain forward-looking assessments. These are based upon a number of assumptions concerning future conditions that ultimately may prove to be inaccurate. Such forward-looking assessments are subject to risks and uncertainties and may be affected by various factors that may cause actual results to differ materially. No member of the LSE Group nor their licensors assume any duty to and do not undertake to update forward-looking assessments.

No part of this information may be reproduced, stored in a retrieval system or transmitted in any form or by any means, electronic, mechanical, photocopying, recording or otherwise, without prior written permission of the applicable member of the LSE Group. Use and distribution of the LSE Group data requires a licence from FTSE, Russell, FTSE Canada, FTSE FI, FTSE FI Europe, YB, BR and/or their respective licensors.

About FTSE Russell

FTSE Russell is a leading global provider of index and benchmark solutions, spanning diverse asset classes and investment objectives. As a trusted investment partner we help investors make better-informed investment decisions, manage risk, and seize opportunities.

Market participants look to us for our expertise in developing and managing global index solutions across asset classes. Asset owners, asset managers, ETF providers and investment banks choose FTSE Russell solutions to benchmark their investment performance and create investment funds, ETFs, structured products, and index-based derivatives. Our clients use our solutions for asset allocation, investment strategy analysis and risk management, and value us for our robust governance process and operational integrity.

For over 35 years we have been at the forefront of driving change for the investor, always innovating to shape the next generation of benchmarks and investment solutions that open up new opportunities for the global investment community.

To learn more, visit lse.com/ftse-russell; email info@ftserussell.com; or call your regional Client Service team office:

EMEA +44 (0) 20 7866 1810

North America +1 877 503 6437

Asia-Pacific

Hong Kong +852 2164 3333

Tokyo +81 (3) 6441 1430

Sydney +61 (0)2 7228 5659



**FTSE
RUSSELL**
An LSEG Business