

Through the Box (TTB) Report with the Fed

Implications on forward TBA deliverables

January 2022

AUTHOR

Albert Durso

Senior RMBS/CMBS Strategist-
Research & Analytics
+1 347 410 1298
albert.durso2@lseg.com

CONTRIBUTOR

Guang Yu

Senior Manager/Agency MBS
Research, Yield Book Research
+1 347 797 5219
guang.yu@lseg.com

Overview

At the November 2021 FOMC meeting, the Federal Reserve bank announced plans to scale back its MBS and Treasury purchases as it was deemed that the markets had sufficiently improved to warrant such a move. For December's follow up, the Fed sped up the timeline even further, reducing MBS purchases to \$20 billion per month with language to suggest an end to any new purchases by March 2022.

To date, the Fed has accumulated \$2.6 Trillion in Agency Mortgage-Backed Securities (MBS) dating back to the initial open market operations of January 2009. There have been 3 incarnations of the Quantitative Easing (QE) initiative involving MBS, and 4 involving Treasuries.

The Fed "desk" routinely buys TBA ("to be announced") MBS securities in the secondary market, often referred to as "cheapest to deliver" (CTD) or "worst to deliver" (WTD). Given their indiscriminating buying habits, it stands to reason that the desk's forward absence will have material repercussions upon TBA deliverables.

In our examination of the Fed's MBS holdings, we have found that the "box report" on deliveries into the Fed is only slightly worse than what the street encounters with its counter parties, primarily regarding the AOLS (average original loan size). Results in production coupons that the Fed primarily engages in aren't as severe as originally thought with the bulk of new issuance adhering to overall lower mortgage rates, hence WACs aren't as diverse as first feared. However, the increased FHFA guidelines on conforming loan limits will expand the seller's option to deliver higher AOLS to the TBA buyer and weaken deliverables at least in that regard.

Fed operations for December 2021 settlement cycle

For December 2021 Class A settlement period, the Fed bought \$66.938 billion 30yr FNMA/UMBS 2% and 2.5%. There were \$369.223 Billion TBA-eligible 30yr 2% and 2.5% deemed CTD or WTD worthy (generic/no spec story, <6 WALA). These have been the Fed's primary coupons the past six months and Class A the largest holdings overall.

Below is the December Class A box report of the Fed, overlaid with a comparable dealers TTB report.

Note the WAMs (weighted average maturities), WALAs (Weighted average life), FICOs (credit score) and LTVs (loan to value) are highly correlated, due primarily to current production loans all underwritten in a low interest rate environment with the bulk of those borrowers slotting into conforming GSE profiles. Basic variances on WACs, WAMs, WALAs, and AOLs speak of deteriorating profiles when set against the Yield Book model.

Exhibit 1: Class A Through-The-Box December '21-Fed vs. Street

	Coupon	WAC	WAM	WALA	AOLS	LTV	FICO	OAS	OAD	PX	CPR1	CPR LT
Fed	2	2.88	358	1	421,279	70	761	-8	5.098	99.5625	4.4	8.7
Street avg	2	2.89	359	1	381500	71	758	-6	5.159	99.5625	4.4	8.6
diff	0	-0.01	-1	0	39779	-1	3	-2	-0.061	0	0	0.1
Fed	2.5	3.28	357	2	405,641	78	737	4	3.977	101.9688	10.1	13.4
Street avg	2.5	3.29	357	3	324000	80	733	10	4.141	101.9688	10	12.9
diff	0	-0.005	0	-1	81641	-2	4	-6	-0.164	0	0.1	0.5

Source: Yield Book

Overall Fed holdings through December 2021

From the table below, you can see higher gross AOLs on most holdings. The longer WALAs and shorter WAMS are primarily a function of the holding period over and above the current TBA delivery.

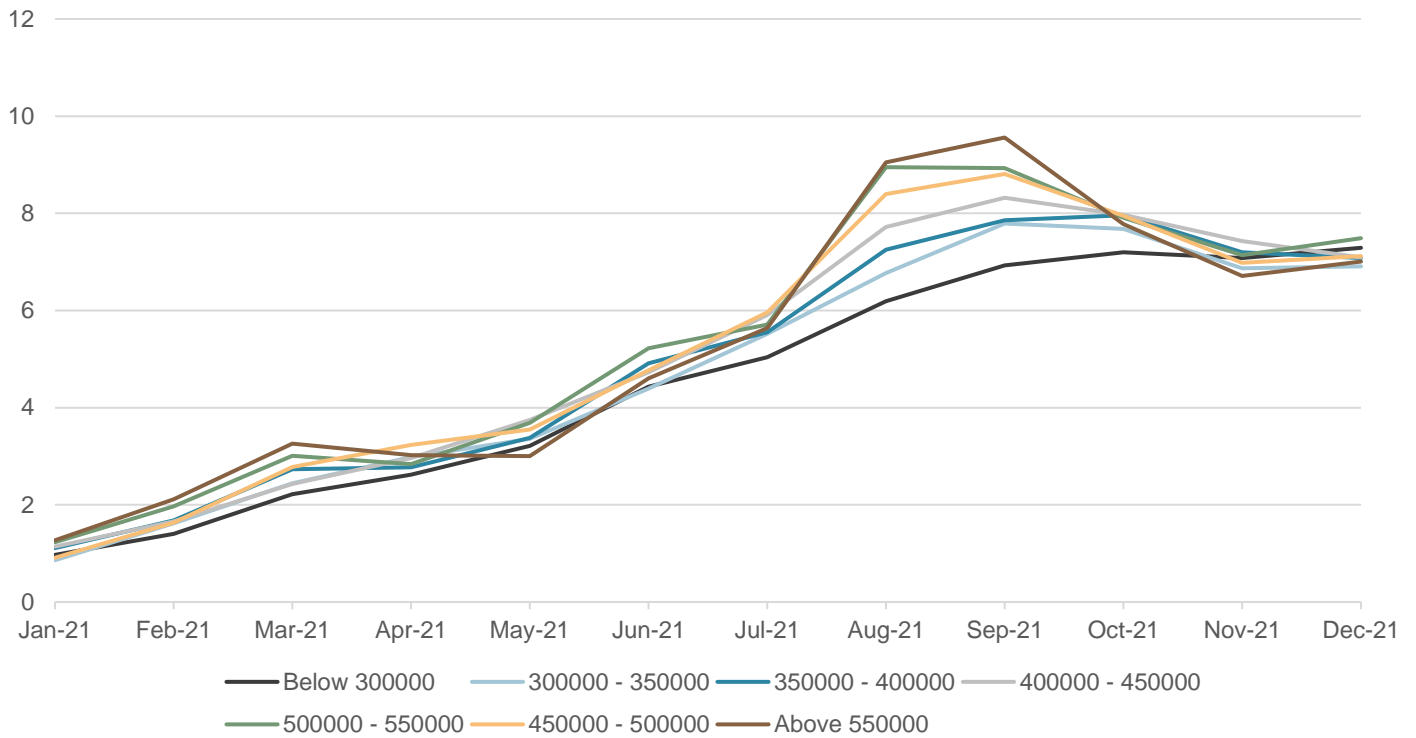
The following charts highlight the disparity in 1 month CPRs (2021 Issuance) given a higher banded AOLs, intuitively as lower banded AOLs prepay at a slower speed.

Exhibit 2: Class A Fed holdings vs. Street TTB

	Coupon	WAC	WAM	WALA	WAOLS	LTV	FICO
Fed	1.5	2.52	346.96	10.52	413270	69	773
	2	2.88	347.64	9.05	404720	71	765
	2.5	3.34	348.83	12.14	383748	75	751
	3	3.73	287.42	62.9	321309	75	759
	3.5	4.15	270.93	78.37	298506	76	749
	4	4.61	264.66	84.88	289974	76	739
	4.5	5.02	234.58	113.81	274822	73	740
	Coupon	WAC	WAM	WALA	WAOLS	LTV	FICO
Street	1.5	2.385	356.5	2.5	377	66.5	770.5
	2	2.89	359	1	381.5	70.5	754.5
	2.5	3.285	356.5	2.5	324	80	732.5
	3	3.865	342	15	324.5	82	713.5
	3.5	4.39	332.5	25	305	85	722
	4	4.83	327.5	28.5	313.5	85	713.5
	4.5	5.22	322	34	292.5	85.5	712

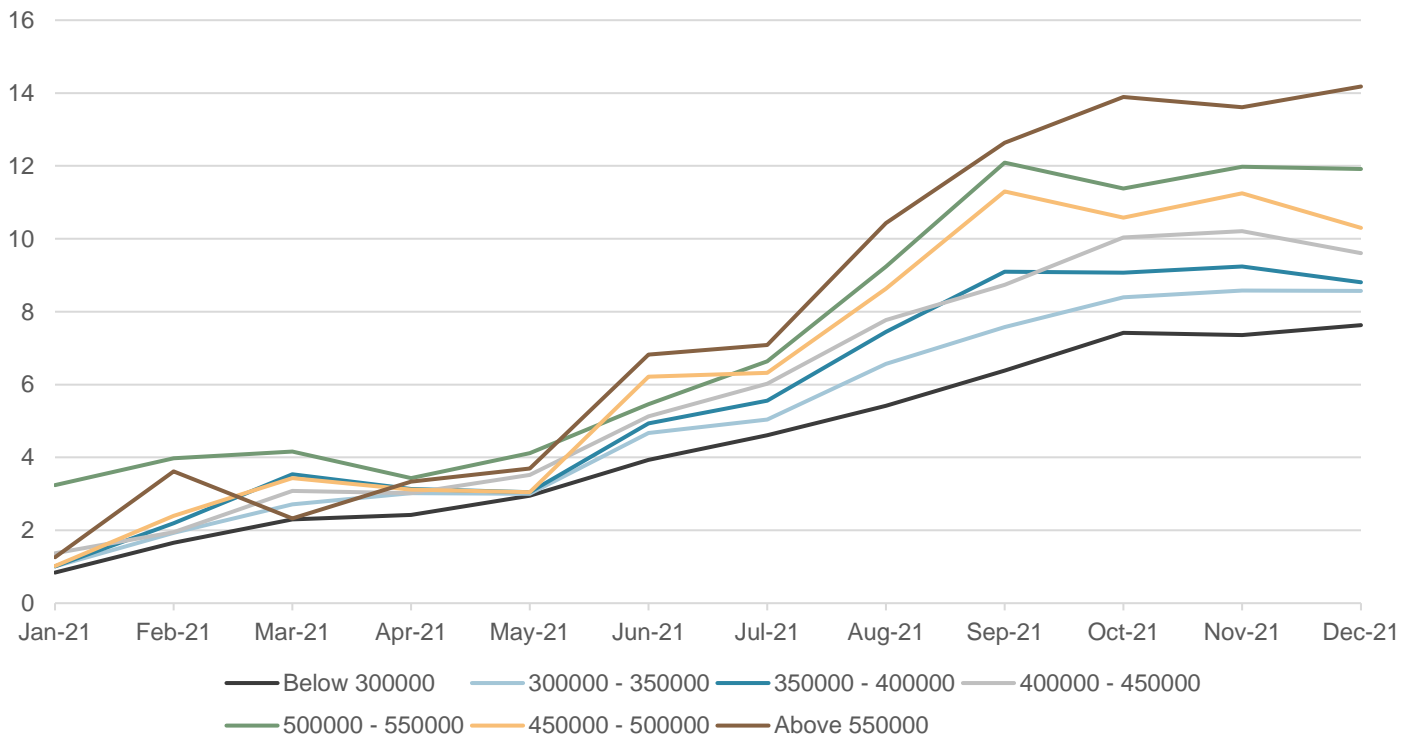
Source: Yield Book

Exhibit 3: Upper band AOLS CPRs UMBS 2s



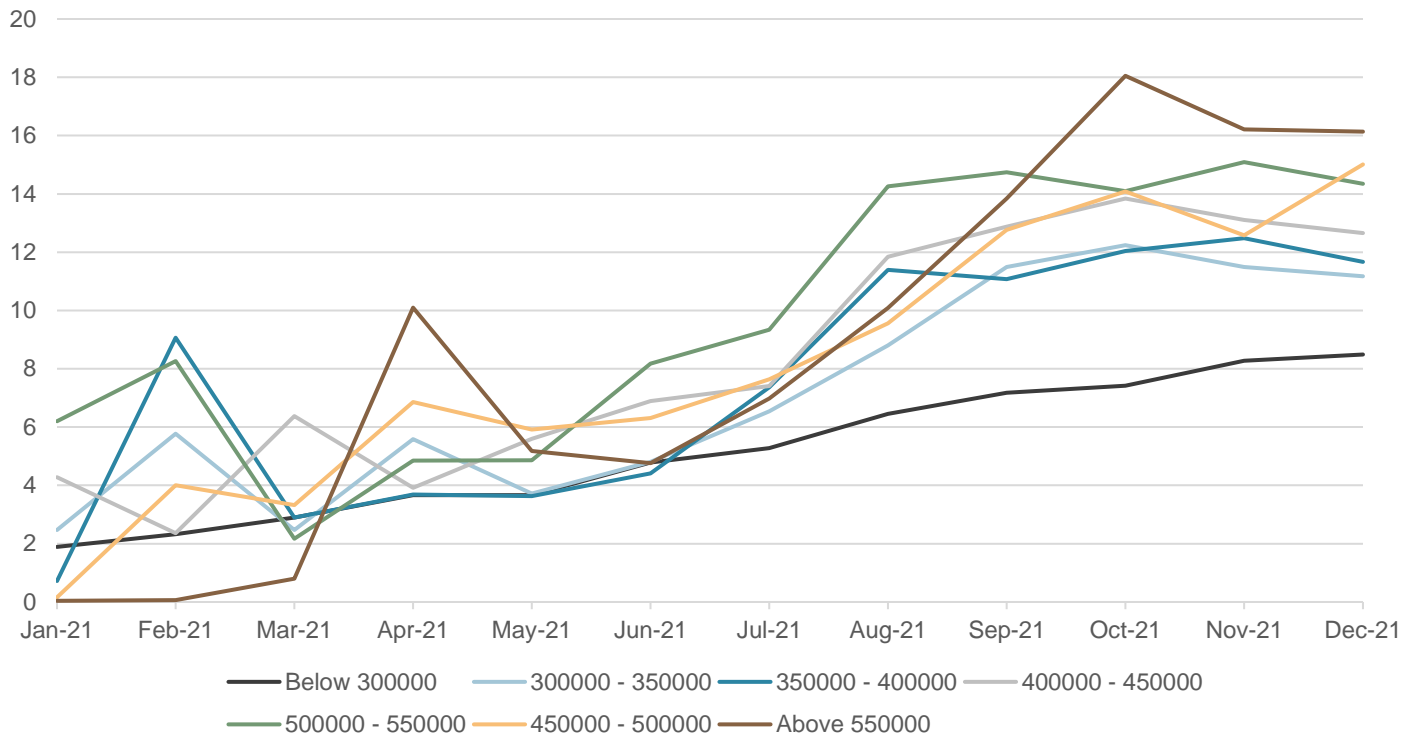
Source: eMBS AMA, FNMA, FHLMC

Exhibit 4: Upper band AOLS CPRs UMBS 2.5%_s



Source: eMBS AMA, FNMA, FHLMC

Exhibit 5: Upper band AOLS CPRs UMBS 3s



Source: eMBS AMA, FNMA, FHLMC

Data findings and conclusions

1. Higher Gross WACs are evident on the Through the Box vs. generic aggregations (2021 vintages). Using premium priced UMBS 3% for effect; overall averages for 2021 vintages (TBA probable) we find; 3.67% WAC, 352 WAM, that calculates to a break even or dollar roll "carry" of $6 \frac{3}{4}$ 32nds. Using the CTD profile from the Street; 3.86 WAC, 342 WAM, "carry" or break even decreases to $2 \frac{1}{4}$ 32nds.
2. Average Original Loan sizes were the main disparity between Street and Fed TTB results on par and current production coupons. While production coupons (UMBS 2%, 2.5%) all delivered low WALAs and had similar characteristics otherwise (LTV, FICO, WAM), the larger loan sizes are the differentiators and could portend potentially fast prepay speeds. AOLS on Street CTD was \$386k while Fed AOLS was \$421k, causing speeds to rise 0.5CPR Lifetime OAD to shorten 0.164 years and OAS to tighten 6bps (on cuspy 2.5S \$102 priced securities).
3. Once the Fed does exit TBA purchases and is relegated to only prepayment reinvestments, the TBA delivery upon the street will have its greatest consequence in AOLS. Because the Fed did stick to current coupons primarily, the lower interest rates it fostered did result in less damaging WACs for its portfolio. Variance in average loan size will be the main consequence to forward TBA buyers.

About Yield Book

Yield Book is a trusted and authoritative source for fixed income analytics that enables market makers and institutional investors to perform complex analysis of their portfolios, benchmarks, trading decisions, historical performance, and risk. Yield Book products offer analytical insight into an extensive range of financial products in the fixed income space including governments, agencies, corporates, high yield, emerging markets, mortgages, ABS, CMBS, CMOs, and derivatives. The platform utilizes dedicated centralized servers that help ensure reliable, prompt data delivery. Yield Book forms part of London Stock Exchange Group (LSEG)'s Data and Analytics division.

To learn more, email sales@yieldbook.com; [request a demo](#); visit yieldbook.com; or call your regional Client Service Team office

Americas

+1 646 989 2200

EMEA

+44 20 7334 8963

Asia-Pacific

Hong Kong +852 2164 3333

Tokyo +81 3 4563 6346

Taipei +866 2 8726 9778

© 2022 London Stock Exchange Group plc and its applicable group undertakings (the "LSE Group"). The LSE Group includes (1) FTSE International Limited ("FTSE"), (2) Frank Russell Company ("Russell"), (3) FTSE Global Debt Capital Markets Inc. and FTSE Global Debt Capital Markets Limited (together, "FTSE Canada"), (4) FTSE Fixed Income Europe Limited ("FTSE FI Europe"), (5) FTSE Fixed Income LLC ("FTSE FI"), (6) The Yield Book Inc ("YB") and (7) Beyond Ratings S.A.S. ("BR"). All rights reserved.

FTSE Russell® is a trading name of FTSE, Russell, FTSE Canada, FTSE FI, FTSE FI Europe, YB and BR. "FTSE®", "Russell®", "FTSE Russell®", "FTSE4Good®", "ICB®", "The Yield Book®", "Beyond Ratings®" and all other trademarks and service marks used herein (whether registered or unregistered) are trademarks and/or service marks owned or licensed by the applicable member of the LSE Group or their respective licensors and are owned, or used under licence, by FTSE, Russell, FTSE Canada, FTSE FI, FTSE FI Europe, YB or BR. FTSE International Limited is authorised and regulated by the Financial Conduct Authority as a benchmark administrator.

All information is provided for information purposes only. All information and data contained in this publication is obtained by the LSE Group, from sources believed by it to be accurate and reliable. Because of the possibility of human and mechanical error as well as other factors, however, such information and data is provided "as is" without warranty of any kind. No member of the LSE Group nor their respective directors, officers, employees, partners or licensors make any claim, prediction, warranty or representation whatsoever, expressly or impliedly, either as to the accuracy, timeliness, completeness, merchantability of any information or of results to be obtained from the use of FTSE Russell products, including but not limited to indexes, data and analytics, or the fitness or suitability of the FTSE Russell products for any particular purpose to which they might be put. Any representation of historical data accessible through FTSE Russell products is provided for information purposes only and is not a reliable indicator of future performance.

No responsibility or liability can be accepted by any member of the LSE Group nor their respective directors, officers, employees, partners or licensors for (a) any loss or damage in whole or in part caused by, resulting from, or relating to any error (negligent or otherwise) or other circumstance involved in procuring, collecting, compiling, interpreting, analysing, editing, transcribing, transmitting, communicating or delivering any such information or data or from use of this document or links to this document or (b) any direct, indirect, special, consequential or incidental damages whatsoever, even if any member of the LSE Group is advised in advance of the possibility of such damages, resulting from the use of, or inability to use, such information.

No member of the LSE Group nor their respective directors, officers, employees, partners or licensors provide investment advice and nothing in this document should be taken as constituting financial or investment advice. No member of the LSE Group nor their respective directors, officers, employees, partners or licensors make any representation regarding the advisability of investing in any asset or whether such investment creates any legal or compliance risks for the investor. A decision to invest in any such asset should not be made in reliance on any information herein. Indexes cannot be invested in directly. Inclusion of an asset in an index is not a recommendation to buy, sell or hold that asset nor confirmation that any particular investor may lawfully buy, sell or hold the asset or an index containing the asset. The general information contained in this publication should not be acted upon without obtaining specific legal, tax, and investment advice from a licensed professional.

Past performance is no guarantee of future results. Charts and graphs are provided for illustrative purposes only. Index returns shown may not represent the results of the actual trading of investable assets. Certain returns shown may reflect back-tested performance. All performance presented prior to the index inception date is back-tested performance. Back-tested performance is not actual performance, but is hypothetical. The back-test calculations are based on the same methodology that was in effect when the index was officially launched. However, back-tested data may reflect the application of the index methodology with the benefit of hindsight, and the historic calculations of an index may change from month to month based on revisions to the underlying economic data used in the calculation of the index.

This document may contain forward-looking assessments. These are based upon a number of assumptions concerning future conditions that ultimately may prove to be inaccurate. Such forward-looking assessments are subject to risks and uncertainties and may be affected by various factors that may cause actual results to differ materially. No member of the LSE Group nor their licensors assume any duty to and do not undertake to update forward-looking assessments.

No part of this information may be reproduced, stored in a retrieval system or transmitted in any form or by any means, electronic, mechanical, photocopying, recording or otherwise, without prior written permission of the applicable member of the LSE Group. Use and distribution of the LSE Group data requires a licence from FTSE, Russell, FTSE Canada, FTSE FI, FTSE FI Europe, YB, BR and/or their respective licensors.