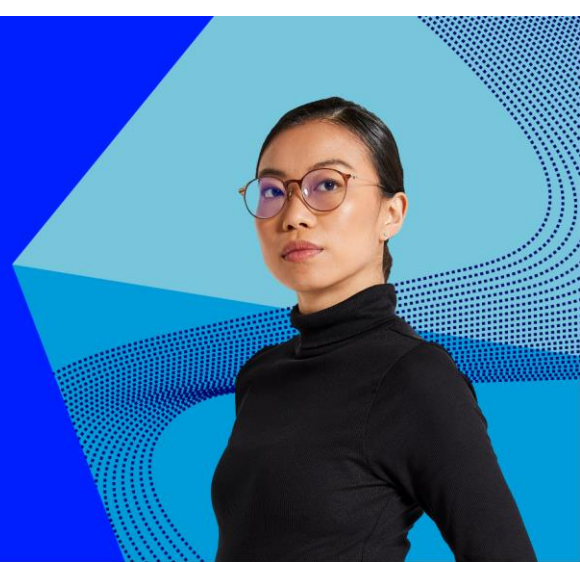


July 2026

ESG Ratings Pricing Framework

LSEG ESG Rating Provider



Regulatory Information

For the purposes of Regulation (EU) 2024/3005 on the transparency and integrity of ESG rating activities, Refinitiv France SAS is the ESG Rating Provider responsible for the issuance of the relevant ESG ratings within the European Union.

This document forms part of the governance and disclosure framework supporting ESG ratings and related products distributed under the LSEG brand. References to LSEG products, methodologies, governance frameworks and related disclosures reflect the global operating framework supporting those products and services.

This document forms part of the disclosure framework established to support compliance with the Regulation (EU) 2024/3005 and should be read together with the publicly available disclosure documents at: <https://www.lseg.com/en/data-analytics/sustainable-finance/regulatory-disclosures>.

The use of the LSEG brand in this document is for branding purposes only and does not affect, modify or supersede the identification of the ESG Rating Provider for the purposes of Regulation (EU) 2024/3005.

Objective

The ESG Rating Provider is committed to taking steps to ensure that fees charged to its clients for ESG scores and ratings in scope of the ESG Ratings are fair, reasonable, transparent and non-discriminatory.

Summary

This document sets out the disclosures provided by the ESG Rating Provider in accordance with the Regulation and RTS on Public Disclosures. It is intended to provide stakeholders with an understanding of how fees are applied in line with the principles of fairness, reasonableness, transparency, and non-discrimination.

As applicable, the sections that follow present the relevant disclosures on the ESG Rating Provider's business model and revenue derived, the fee-setting criteria and principles, and the interaction between ESG rating fees and fees for other services. Together, these disclosures are designed to ensure a transparent and informed view of the ESG Rating Provider's commercial practices in respect of the ESG scores and ratings in scope of the ESG Rating Regulation.

Business Model

The ESG Rating Provider offers ESG scores and related products to clients only via a subscription model (except limited company level scores displayed on lseg.com).

General Information

On and from 2 July 2026,

- a. Discounts and billing holidays on ESG Ratings:** In line with regulatory requirements, discounts or billing holidays on standard list price of ESG scores and ratings are not permitted.
- b. Price increases:** ESG scores and ratings continue to be subject to annual price increases as per the ESG Rating Provider standard commercial policies.
- c. Related considerations:** Without prejudice to (a) above, any pricing variations reflected on invoices for ESG scores or ratings are based on customer agnostic objective factors, including the scope of user rights, technical delivery methods, and the value derived from the use of such products and data.
- d. Impact on fees charged for other services:** The determination of the list price for ESG scored or ratings is not impacted by the fees charged for other services.

Annual Review

These processes are subject to review by the ESG Ratings Provider on an annual basis to ensure it continues to meet regulatory requirements and reflects any significant changes to the procedure.

Republication or redistribution of LSE Group content is prohibited without our prior written consent.

The content of this publication is for informational purposes only and has no legal effect, does not form part of any contract, does not, and does not seek to constitute advice of any nature and no reliance should be placed upon statements contained herein. Whilst reasonable efforts have been taken to ensure that the contents of this publication are accurate and reliable, LSE Group does not guarantee that this document is free from errors or omissions; therefore, you may not rely upon the content of this document under any circumstances and you should seek your own independent legal, investment, tax and other advice. Neither We nor our affiliates shall be liable for any errors, inaccuracies or delays in the publication or any other content, or for any actions taken by you in reliance thereon.

Copyright © 2026 LONDON STOCK EXCHANGE GROUP. ALL RIGHTS RESERVED.