

Organisational Structure Statement

LSEG ESG Rating Provider

Regulatory Information

For the purposes of Regulation (EU) 2024/3005 on the transparency and integrity of ESG rating activities, Refinitiv France SAS is the ESG Rating Provider responsible for the issuance of the relevant ESG ratings within the European Union.

This document forms part of the governance and disclosure framework supporting ESG ratings and related products distributed under the LSEG brand. References to LSEG products, methodologies, governance frameworks and related disclosures reflect the global operating framework supporting those products and services.

This document forms part of the disclosure framework established to support compliance with the Regulation (EU) 2024/3005 and should be read together with the publicly available disclosure documents at: <https://www.lseg.com/en/data-analytics/sustainable-finance/regulatory-disclosures>.

The use of the LSEG brand in this document is for branding purposes only and does not affect, modify or supersede the identification of the ESG Rating Provider for the purposes of Regulation (EU) 2024/3005.

Objective

This disclosure provides a summary of the organisational structure pertaining to ESG Ratings, in accordance with Regulation (EU) 2024/3005, Article 23 requirements (Annex III.1 (d)).

Legal Entity and Group Context

Refinitiv France is an indirect, wholly owned subsidiary of the London Stock Exchange Group plc (100% ownership). Refinitiv France is responsible for ESG rating activities conducted by, or endorsed through, Refinitiv France for the purposes of the ESG Ratings Regulation (EU) 2024/3005 .

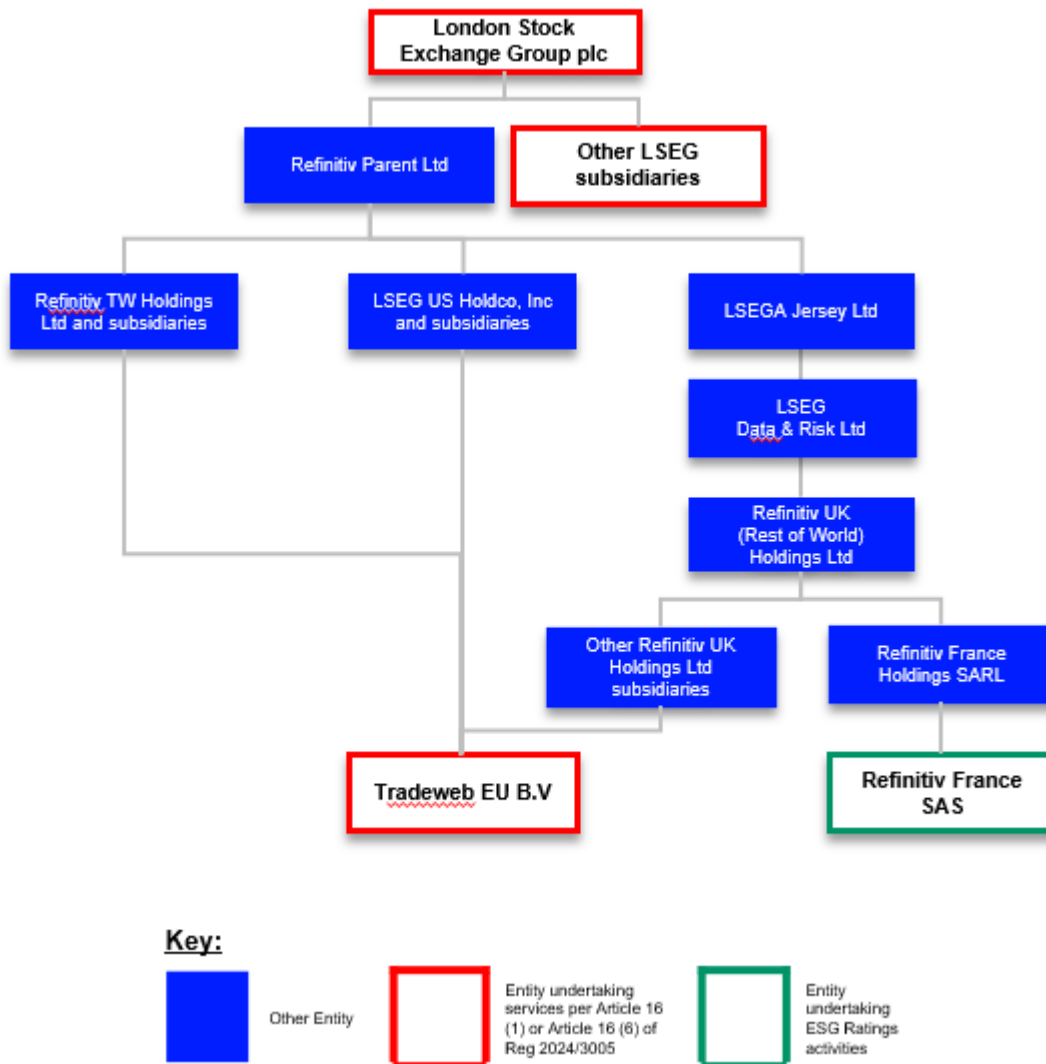
In addition to the ESG rating activities mentioned above, companies within the London Stock Exchange Group plc also engages in the following activities:

- The provision of benchmarks as defined in Article 3(1), point (5), of Regulation (EU) 2016/1011, via FTSE Russell (FTSE International Limited/FTSE EU SAS)
- Investment services and activities as defined in Article 4(1), point (2), of Directive 2014/65/EU, via Turquoise Global Holdings Europe B.V., Tradeweb EU B.V., FRTSIL, and Quantile B.V.

Refer to **Appendix A** for an organizational chart illustrating ownership links of Refinitiv France with parent undertakings and subsidiaries, indicating whether any of those entities perform the activities noted above.

Refinitiv France operates within LSEG's wider governance, risk management and control environment, while maintaining arrangements designed to support the independence, integrity and transparency of ESG rating activities. These arrangements include defined decision-making procedures, reporting lines, allocation of responsibilities, independent review and challenge, and documented escalation channels.

Appendix A: Organisational Structure Chart



For more details refer to [LSEG Annual Report 2025](#).

Replication or redistribution of LSE Group content is prohibited without our prior written consent.

The content of this publication is for informational purposes only and has no legal effect, does not form part of any contract, does not, and does not seek to constitute advice of any nature and no reliance should be placed upon statements contained herein. Whilst reasonable efforts have been taken to ensure that the contents of this publication are accurate and reliable, LSEG Group does not guarantee that this document is free from errors or omissions; therefore, you may not rely upon the content of this document under any circumstances and you should seek your own independent legal, investment, tax and other advice. Neither We nor our affiliates shall be liable for any errors, inaccuracies or delays in the publication or any other content, or for any actions taken by you in reliance thereon.

Copyright © 2026 LONDON STOCK EXCHANGE GROUP. ALL RIGHTS RESERVED.