

# LSEG Workspace Add-in

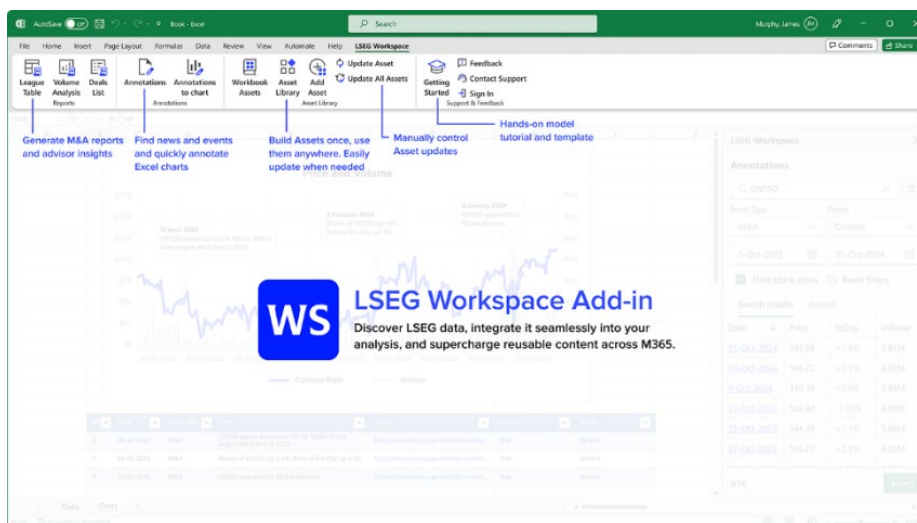


## Experience workflows and visualisation of financial insights seamlessly with LSEG Workspace Add-in for Excel and PowerPoint

**The LSEG Workspace Add-in is designed to enhance data discoverability, visualisation, and usability in Excel and PowerPoint.**

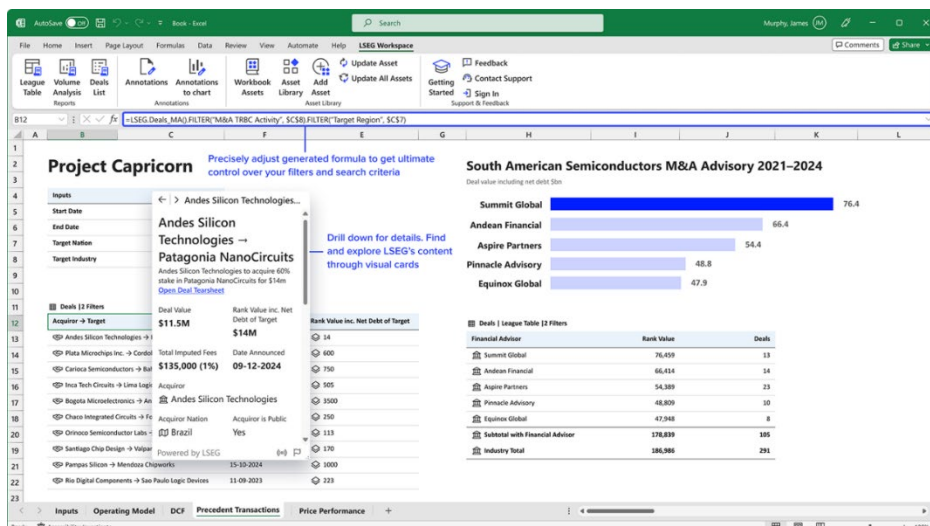
In today's data-driven world, access to reliable data and tools that simplify complex analysis is crucial.

The partnership between LSEG and Microsoft has enabled the building of new tools to revolutionise data access within Excel. The Add-in increases productivity by streamlining the process of creating visualisations and increasing the reusability of charts, tables, and PowerPoint slides.

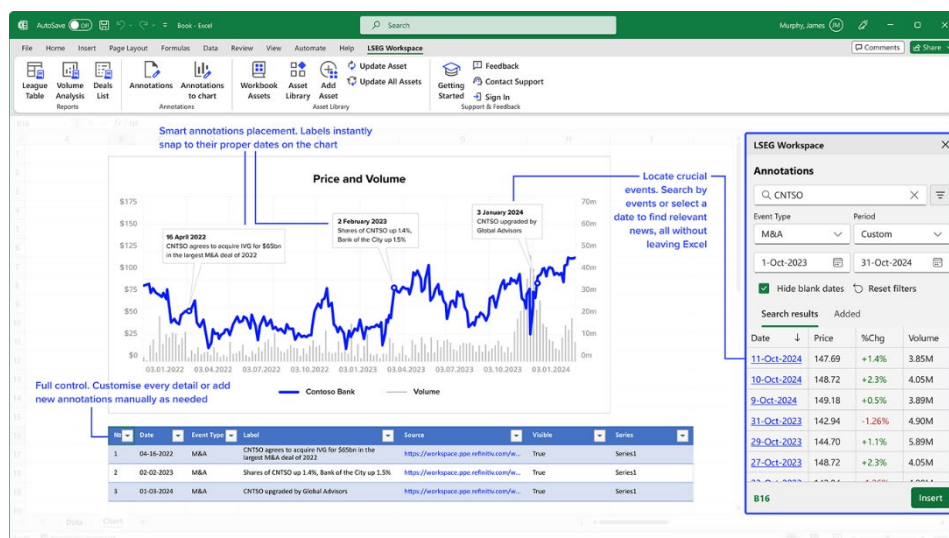


## LSEG Workspace Add-in will save time by reducing manual processes:

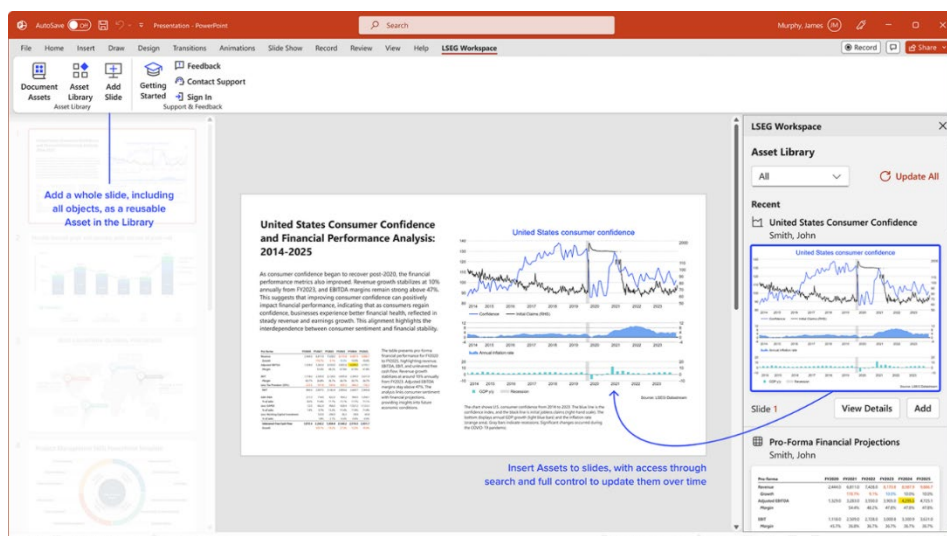
- **Seamless data discovery with Data Types and simplified formulas** - *Discover data contextually, using rich metadata to see related data and calculation methodology within cells, enhancing data accuracy and usability.*



- **Enriched visualisations using the Annotations application** - *Search, sort, and annotate charts with key generated events and news, making data analysis more insightful.*



- **Reusable content with the Asset Library** - *Supercharge productivity by creating reusable slides, charts, and tables with custom tags and pre-generated metadata, enabling powerful search and sharing across Excel and PowerPoint.*



This Add-in significantly enriches data discoverability, enhances visualisations, and improves the reusability of analysis and reports across Excel and PowerPoint.

## Who benefits from Workspace Office Add-in for faster data analysis and visualisation?

- Junior bankers creating pitch books in PowerPoint with league tables
- Equity research analysts annotating charts in market updates
- Wealth advisors reusing slides for client updates

*Users require LSEG Workspace license and Microsoft M365 licence. Access to data/features in the app will be driven by the user's LSEG entitlements.*